



# FACT SHEET

## Manufactured Gas Plant Site

Receive Site Fact Sheets by *Email*. See "For More Information" to Learn How.

**Site Name:** K - Williamsburg Works  
**DEC Site #:** 224055  
**Address:** Kent Ave & 12th Street  
Brooklyn, NY 11211

Have questions?  
See  
"Who to Contact"  
Below

### Cleanup Action to Begin at State Superfund Site Public Meeting Announced

**Public Meeting, Tuesday, 9/29/2015 at 6:30 PM**  
**Bushwick Inlet Park Headquarters, Kent Ave. and N. 9th St., Brooklyn NY**  
NYSDEC invites you to this discussion about cleanup activities that will begin at the site. You are encouraged during the session to ask questions and discuss the upcoming site activities.

Action is about to begin that will address the contamination related to the K - Williamsburg Works site ("site") located at Kent Ave & 12th Street, Brooklyn, NY under New York's State Superfund Program. Please see the map for the site location.

Documents related to the cleanup of this site can be found at the location(s) identified below under "Where to Find Information." The cleanup activities will be performed by the responsible party with oversight provided by the New York State Department of Environmental Conservation (NYSDEC).

#### Highlights of the Upcoming Cleanup Activities

The cleanup action will be performed by National Grid as an Interim Remedial measure (IRM) on the 50 Kent Ave. portion of the former Manufactured Gas Plant (MGP) site, which is a vacant lot owned by the New York City Department of Parks and Recreation (NYC Parks). The goal of the cleanup action is to achieve cleanup levels that protect public health and the environment. The cleanup action for the site includes:

- 1) Excavation and off-site disposal of two gas holder foundations and associated coal tar-contaminated soil to an approximate depth of 25 feet, and;
- 2) In-situ stabilization/solidification (ISS) of one of the gas holder foundations and its contents.
- 3) Soil on the remainder of the 50 Kent Ave parcel will be excavated to the water table, approximately 5 feet below ground surface, and disposed off-site. The site will then be returned to approximately its existing grade. A soil cover, consisting of a minimum of two feet of soil meeting Restricted Residential Soil Cleanup Objectives, which also allows for active recreational use, will be placed across the entire site.
- 4) Installation of coal tar recovery wells immediately outside the 50 Kent Ave. parcel in the street rights of way to collect tar which lies beyond the boundaries of the excavation.

This Interim Remedial Measure is being prioritized to allow prompt cleanup of the City-owned portion of the Williamsburg MGP site. This portion is slated for redevelopment as part of NYC Parks' long-term park development plan. Investigation and cleanup of the remainder of the Williamsburg MGP site (which was until recently covered with a large document warehouse) is pending.

#### *Additional Details*

The deep excavation and the ISS of the gas holder will be performed under a temporary tent-like structure to control the release of Volatile Organic Compounds and nuisance odors.

#### **Next Steps**

After completion of the cleanup activities, the responsible party will prepare a Construction Completion Report. The Construction Completion Report will describe the cleanup activities completed and certify that cleanup requirements have been achieved or will be achieved. The site will be restored as a clean grass-covered lot, to enable renovation by NYC Parks in consultation with the community at a future date. The New York State Department of Environmental Conservation (NYSDEC) will keep the public informed throughout the cleanup of the site.

#### **Background**

**Location:** The Williamsburg Works Manufactured Gas Plant (MGP) site is located in a commercial/industrial area in the Williamsburg section of Brooklyn, New York. The site is approximately six acres in size and is composed of three parcels of land located on the east bank of the East River between North 11th and North 12th Streets on the west and east sides of Kent Avenue.

**Site features:** Site features include a vacant asphalt paved lot and the foundation slab for the recently demolished document storage warehouse on the west side of Kent Avenue and a two-story commercial building on the east side of Kent Avenue.

**Current zoning and land use:** The land uses in the area surrounding the former MGP site are currently a mix of industrial, residential, and parkland uses. The privately-owned document storage warehouse was in active use until it was destroyed in a fire on January 31, 2015 and subsequently demolished. The vacant lot at 50 Kent Ave. is owned by the NYC Department of Parks and Recreation and used as an outdoor music venue, flea market and skate park. The two-story commercial building on the east side of Kent Avenue is privately owned and in active use. The nearest residential property is located approximately 1 block to the south.

**Past use of the site:** A manufactured gas plant operated on the site from circa 1850 until approximately 1930. Following the decommissioning of the MGP, the lot was occupied by a NYC Department of Sanitation Garage that was demolished around 2000.

**Site Geology and Hydrogeology:** The site is underlain by: urban fill and varied glacial sediments consisting of outwash sand and gravel, till, and lenticular clay more than 100 feet in thickness. The groundwater table is approximately 5 feet below ground surface. Groundwater flows to the west, toward the East River.

Additional site details, including environmental and health assessment summaries, are available on NYSDEC's website at:  
<http://www.dec.ny.gov/cfm/xtapps/derexternal/haz/details.cfm?pageid=3&progno=224055>

**State Superfund Program:** New York's State Superfund Program (SSF) identifies and characterizes suspected inactive hazardous waste disposal sites. Sites that pose a significant threat to public health and/or the environment go through a process of investigation, evaluation, cleanup and monitoring.

NYSDEC attempts to identify parties responsible for site contamination and require cleanup before committing State funds.

For more information about the SSF, visit: <http://www.dec.ny.gov/chemical/8439.html>

## FOR MORE INFORMATION

### Where to Find Information

Project documents are available at the following location(s) to help the public stay informed.

Brooklyn Public Library  
Williamsburg Branch  
240 Division St., at Marcy Ave.  
Brooklyn, NY 11211  
phone: (718) 302-3485

Project documents are also available on the NYSDEC website at:

<http://www.dec.ny.gov/chemical/37550.html>

### Who to Contact

Comments and questions are always welcome and should be directed as follows:

#### Project-Related Questions

Henry Willems  
NYS Department of Environmental Conservation  
Division of Environmental Remediation  
625 Broadway  
Albany, NY 12233-7014  
Tel: (518) 402-9473  
Email: [henry.willems@dec.ny.gov](mailto:henry.willems@dec.ny.gov)

#### Site-Related Health Questions

Bridget Boyd  
New York State Department of Health  
BEEI Empire State Plaza  
Corning Tower Room 1787  
Albany, NY 12237  
Tel: (518) 402-7860  
Email: [BEEI@health.ny.gov](mailto:BEEI@health.ny.gov)

**We encourage you to share this fact sheet with neighbors and tenants, and/or post this fact sheet in a prominent area of your building for others to see.**

#### Receive Site Fact Sheets by Email

Have site information such as this fact sheet sent right to your email inbox. NYSDEC invites you to sign up with one or more contaminated sites county email listservs available at the following web page:  
<http://www.dec.ny.gov/chemical/61092.html>. It's quick, it's free, and it will help keep you *better informed*.



As a listserv member, you will periodically receive site-related information/announcements for all contaminated sites in the county(ies) you select.

Note: Please disregard if you already have signed up and received this fact sheet electronically.



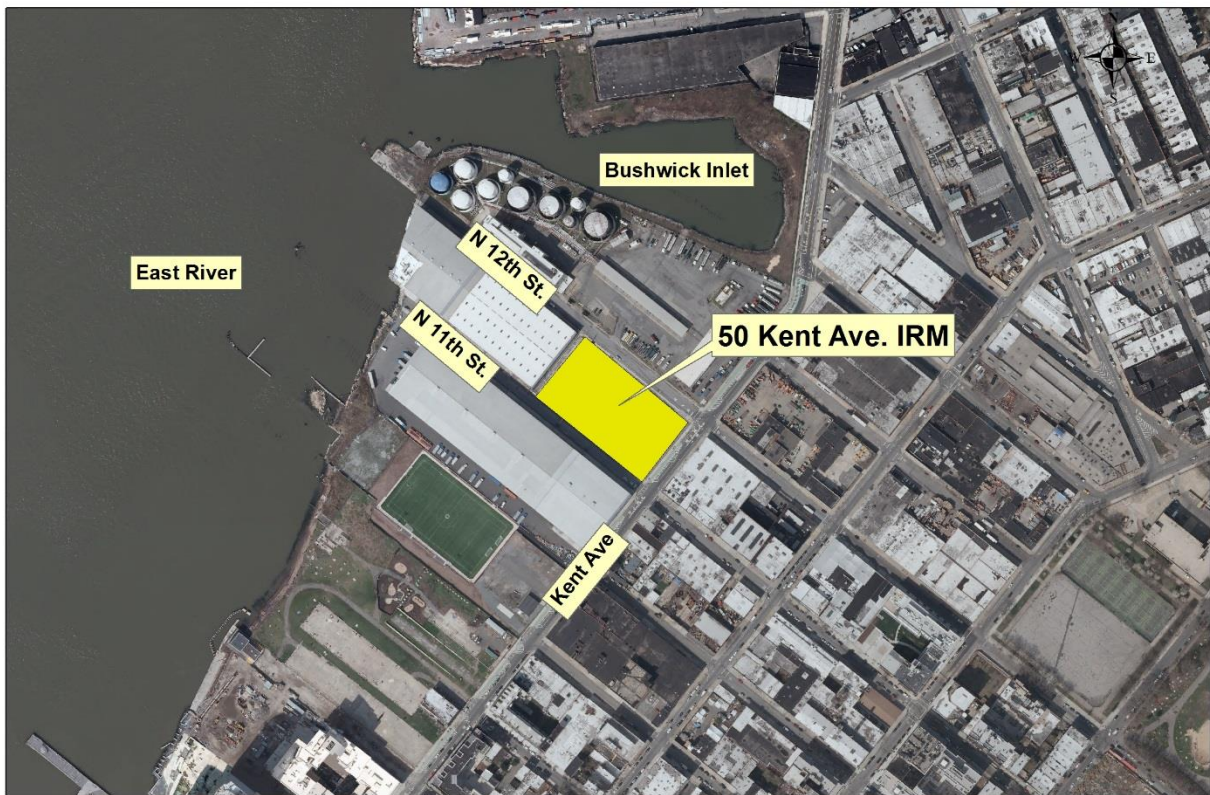


Figure 1 Site Location

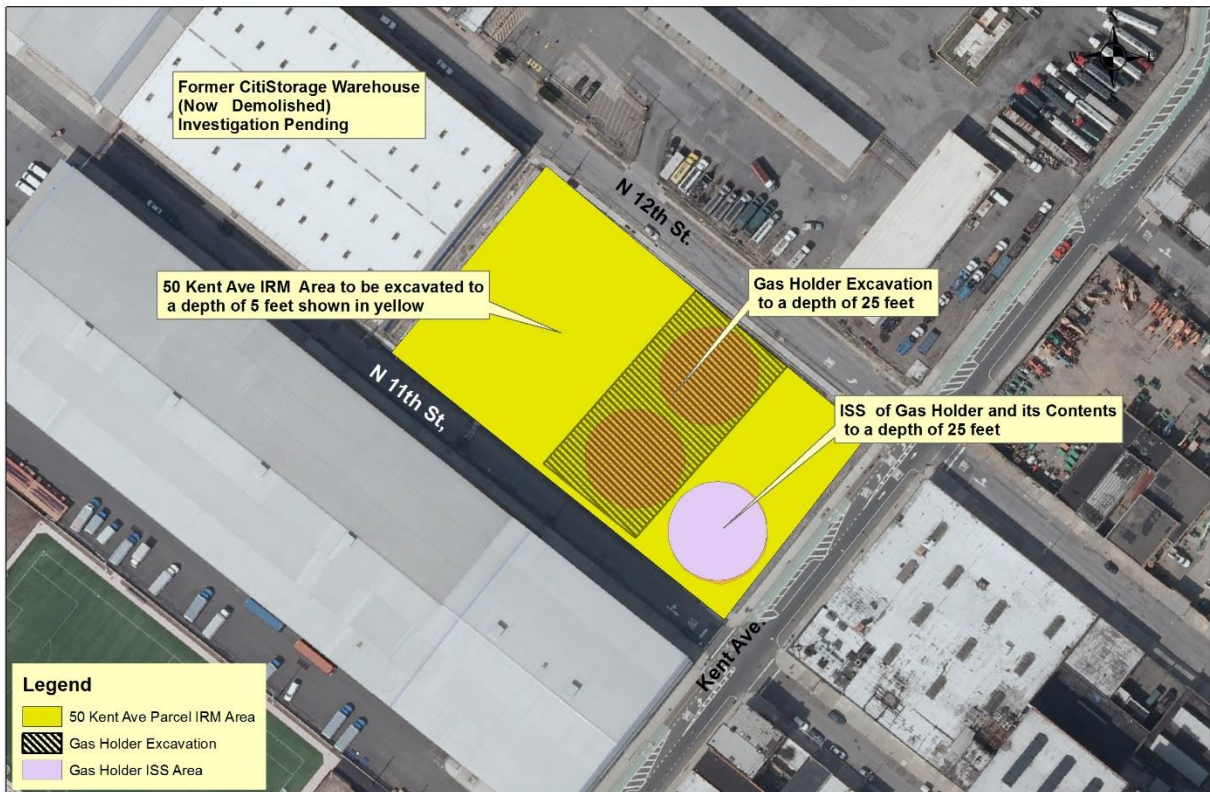


Figure 2 IRM Detail